



# EPIC-VIEW

## EARTH OBSERVATION SATELLITES

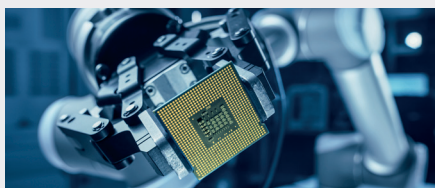
### OPTIMISED FOR EO:

- Designed to host Simera Sense imaging payloads
- Fast downlink to meet your data needs
- High-precision, high-accuracy ADCS for superior stabilisation
- Premium platform with unparalleled flight heritage
- Rapidly manufactured, flight-ready satellite
- Resilient command and data handling
- Features robust, best-in-class safety measures: EPIC-SAFE for reliable and secure operations and data transmission

Parameter	Specification
Design Lifetime	5 years
Platform Size	6U
Telemetry and Telecommand	128 kbps (↑) / 512 kbps (↓) (S-band)
Payload Data	80 Mbps (X band)
Pointing Accuracy	$\leq 0.1$ deg
Pointing Knowledge	$\leq 0.01$ deg
Data Storage	4 GB (min) on platform, 128 GB on payload
Payload Volume Available	2U
Available Payload Power	5 W OAP (based on typical EO mission profile)

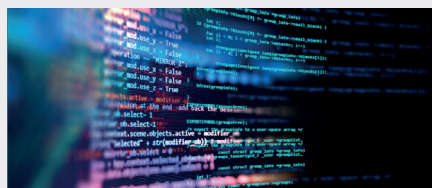
## Speak to us about additional services

### MISSION DESIGN



Every aspect of your space mission can be carefully analysed, from payload and data requirements, to ensure the objectives of your mission are achieved.

### LAUNCH



AAC Clyde Space provide a comprehensive launch and early operations service that can take care of all logistical, insurance and regulatory aspects.

### OPERATIONS



Through our own ground station network and agreements with multiple ground network operators, we are able to facilitate command and control of space assets globally, regardless of their orbits or communications frequencies.

Get in touch with the AAC Clyde Space Missions Sales Team today [enquiries@aac-clydespace.com](mailto:enquiries@aac-clydespace.com)



**AAC  
CLYDE  
SPACE**

**[aac-clydespace.com](http://aac-clydespace.com)  
#SPACEISAWESOME**